



WELCOME TO  
**ROYAL TEAM**

**The Sky Is The Limit For Your Success**

**ROYALTEAM**

[www.royalteam.in](http://www.royalteam.in)

# Introduction

ROYAL TEAM has been constantly working to improve the lives of individuals by assisting in growth in every sphere, be it personal, professional, financial, social, mental or spiritual. They truly go with their motto, which is, “**serving new heights to life**”.

## **What is ROYAL TEAM?**

ROYAL TEAM is a highly skilled and professional, fastest growing network trading company in the Telecom industry which works with one of the world’s best and most proficient management teams, to ensure the delivery of the finest service to its members and consumers. The best part about this company is that it has based most of its working on technology while providing a unique array of features for an efficient service and user interference.

## **How does it work?**

ROYAL TEAM works on the company provides the services like mobile Recharge, DTH Recharge, Utility Bills, Bus/Flight/Train Booking to the members at a reasonable price, the members then offers the services further down the lane and find more consumers, the new consumers then become the distributors to their consumers and so on.



# Mission & Vision

Our MISSION is to contribute to the global community through the daily application of RYTHM – Raise Yourself To Help Mankind. We do this by helping individuals achieve their goals and lead better lives through a combination of an entrepreneurial business opportunity with life-enhancing products.

Our VISION is to be the global ecommerce leader within the direct selling industry using online services like mobile recharge, DTH Recharge, Utility Bills Train/Flight/Bus Booking etc, leveraging this position so as to be a positive influencer in the development of sustainable and professional network marketing communities around the world. ROYAL TEAM's core values are inspired by Mahatma Gandhi, our Corporate Icon, and built on RYTHM - Raise Yourself To Help Mankind, they are:

## **INTEGRITY**

Truth above all. Truth in all! Integrity in thought, word and action.

## **SERVICE**

We serve to lead and lead to serve. Service to all is our credo.

## **SUSTAINABILITY**

We are merely caretakers for the next generation. We must preserve, sustain and even resurrect. LEADERSHIP Lead to Inspire and Inspire to Lead! We nurture and inculcate entrepreneurial passion as the path to independence, inclusiveness and innovation

# UP COMING PROJECT

*India's Most Trusted*

# EDUCATION PORTAL



## WITH NETWORKING



# UP COMING PROJECT (GAMING)



# Our Services



## Mobile Recharge

Online Recharge: Quick and easy online mobile recharge at MobiKwik. Enjoy online prepaid recharge for Airtel, Idea, Jio, Vodafone, BSNL, MTNL, etc.



## DTH Recharge

Fastest Online DTH Recharge AT FreeCharge. Simple and Quick way to do an Online DTH Recharge for Tata Sky, Dish TV, Airtel Digital TV, ETC



## Trading

Trading refers to the act of buying and selling financial instruments, such as stocks, bonds, commodities, currencies, and derivatives, with the aim of making a profit.



## Gaming

Steam is one of the largest digital distribution platforms for PC gaming, with a vast library of games and a strong community.



## Utility

Use this service to pay your electricity bill payment online through e-mitra. Apply Now. Telecom Mobile/Landline Post-paid Bill Payment.



[www.royalteam.in](http://www.royalteam.in)

# Plan Road Map

1 Mobile  
Recharge Service



Coming Soon  
Next 2 Planning.



Coming Soon  
Next 3 Planning Staking



Income Working  
And Non-working



Re-purchase.  
Generation Plan



Auto App Next  
6 Game Trading.  
All Coming Soon

# HOW TO START ?

PACKAGE – 01

Active I'd Only

Rs. 1000/-



Enjoy Recharge Upto Rs. 349/- & Next 11 Month Pay Only Rs. 175/-



# HOW TO START ?

**PACKAGE – 02**

**Active I'd Only**

**Rs. 2100/-**



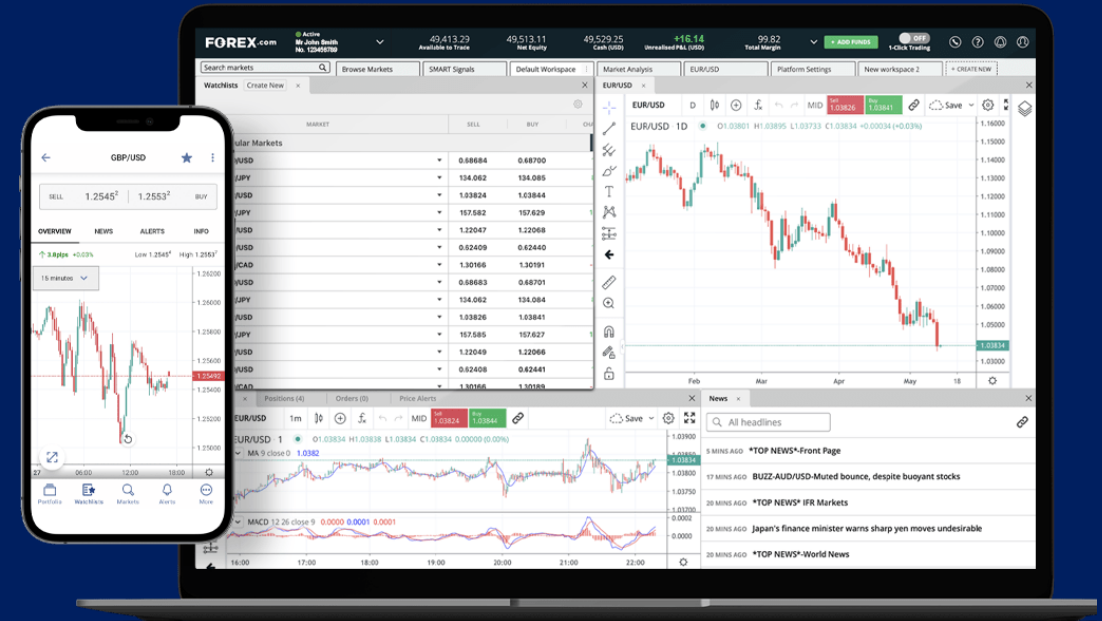
**Enjoy Mobile Recharge & DTH Recharge Upto Rs. 349/-**

# HOW TO START ?

**UPGRADE**

**Upgrade I'd Only**

**Rs. 9000 /-**



**Trading Income Per Months 1200/-**

**Upto 15 Months**



# TYPES OF INCOME



**Matching Income**



**Club Income**



**Trade Bonus**



**Trade Matching Bonus**



**Trade Reward**



**Matching Big Reward**



**Royalty Income**



**Gaming Income Coming Soon**

**3 Direct Sponsor Compulsory Within Six Months Of Joining**

+

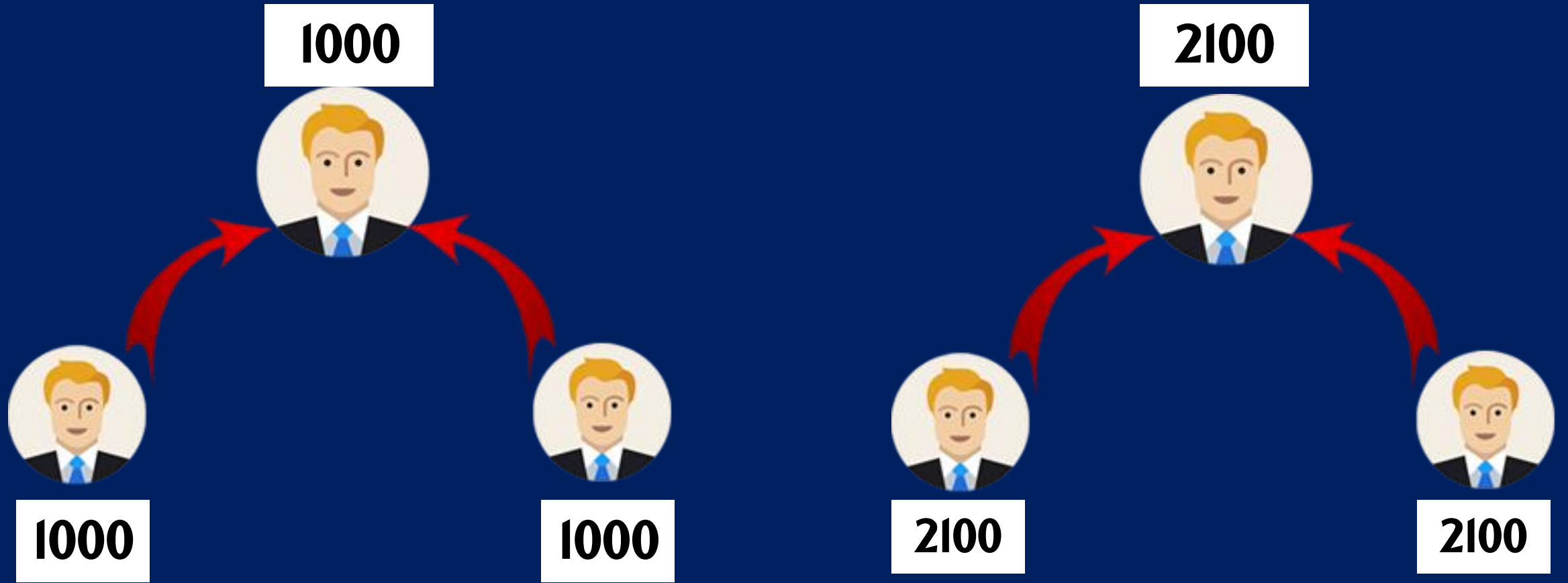
**₹1000 = 1 PV**

**₹2100 = 2 PV**

**1 PV = ₹100**



# MATCHING INCOME



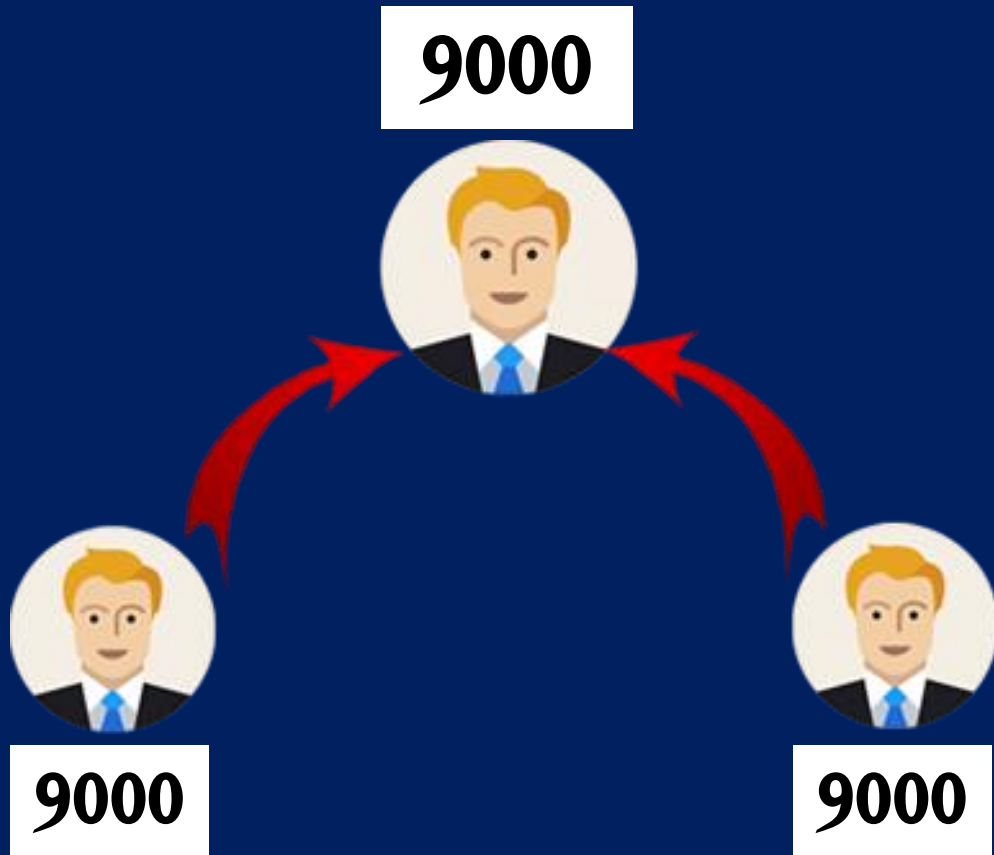
All Pair 1:1

$100 \times 10 = 1000$  Per Day Caping

All Pair 1:1

$200 \times 10.5 = 2100$  Per Day Caping

# MATCHING INCOME



All Pair 1:1

$500 \times 18 = 9000$  Per Day Caping



# MATCHING INCOME (CAPPING)

S.No.	Package	Capping
01	Rs. 1000/-	$100 \times 10 = 1000/-$
02	Rs. 2100/-	$200 \times 10.5 = 2100/-$
03	Rs. 9000/-	$500 \times 18 = 9000/-$

Same Package Same Capping One Day

**10% Of Your All Income Will Be Deducted For Club Fund**

# BIG MATCHING BONUS

S.No	Level	Pair	Income	Reward
1.	Level - 01	5	Rs. 1000/-	Rs. 100/-
2.	Level - 02	20	Rs. 4000/-	Rs. 300/-
3.	Level - 03	40	Rs. 8000/-	Rs. 400/-
4.	Level - 04	90	Rs. 18,000/-	Rs. 1000/-
5.	Level - 05	190	Rs. 38,000/-	Rs. 2000/-
6.	Level - 06	390	Rs. 78,000/-	Rs. 4000/-
7.	Level - 07	890	Rs. 1,78,000/-	Rs. 10,000/-
8.	Level - 08	1890	Rs. 3,78,000/-	Rs. 20,000/-
9.	Level - 09	3890	Rs. 7,78,000/-	Rs. 40,000/-
10.	Level - 10	8890	Rs. 17,78,000/-	Rs. 1,00,000/-
11.	Level - 11	23,890	Rs. 47,78,000/-	Rs. 3,00,000/-
12.	Level - 12	53,890	Rs. 1,07,78,000/-	Rs. 6,00,000/-
13.	Level - 13	1,13,890	Rs. 2,27,78,000/-	Rs. 12,00,000/-
14.	Level - 14	2,63,890	Rs. 5,27,78,000/-	Rs. 30,00,000/-
15.	Level - 15	7,63,890	Rs. 15,27,78,000/-	Rs. 1,00,00,000/-
16.	Level - 16	17,63,890	Rs. 35,27,78,000/-	Rs. 2,00,00,000/-
<b>Total Income :-</b>			<b>Rs. 35,27,78,000/-</b>	<b>Rs. 3,52,77,800/-</b>
<b>16 Level 1 Cr. + Bonus Total Approx Income :- 40 Cr</b>				



# TRADE MATCHING BONUS

S.No	Pair	Income	Reward
1.	5 Pair	Rs. 2500/-	Rs. 1000/- Bluetooth Neckband
2.	30 Pair	Rs. 15,000/-	Rs. 2500/- Watch
3.	80 Pair	Rs. 40,000/-	Rs. 5000/- Sport Shoes
4.	180 Pair	Rs. 90,000/-	Rs. 10,000/- Mobile Phone
5.	430 Pair	Rs. 2,15,000/-	Rs. 50,000/- Laptop
6.	930 Pair	Rs. 4,65,000/-	Rs. 1,00,000/- Bike
7.	1930 Pair	Rs. 9,65,000/-	Rs. 2,00,000/- Bullet Bike
8.	3930 Pair	Rs. 19,65,000/-	Rs. 4,00,000/- Alto Car
9.	8930 Pair	Rs. 44,65,000/-	Rs. 10,00,000/- Brezza Car
10.	23930 Pair	Rs. 1,19,65,000/-	Rs. 40,00,000/- BMW Car
<b>Total Income :-</b>		<b>Rs. 1,19,65,000/-</b>	<b>Rs. 57,68,500/-</b>

**10 Level Matching + Reward Total Income Approx :- 2 Cr**

# CLUB INCOME

SILVER CLUB

2000

GOLD CLUB

4000



Silver

All Pair 1:1

Silver

Gold

All Pair 1:1

Gold

400 X 5 = 2000 Per Day Capping

800 X 5 = 4000 Per Day Capping

# CLUB INCOME

**PLATINUM CLUB**

**8000**

**DIAMOND CLUB**

**16000**



**Platinum**

**All Pair 1:1**



**Platinum**

**1600 X 5 = 8000 Per Day Capping**



**Diamond**

**All Pair 1:1**



**Diamond**

**3200 X 5 = 16000 Per Day Capping**

# CLUB INCOME

CROWN DIAMOND

32000



Crown Diamond

All Pair 1:1

Crown Diamond

6400 X 5 = 32000 Per Day Capping

64000

CROWN DIRECTOR



Crown Director

All Pair 1:1

Crown Director

12800 X 5 = 64000 Per Day Capping

Total Income Of 12,60,000/- Compulsory For Crown Director

# ROYALTY INCOME



# What Did You Get In Last Year ?

Did You Achieve Your Goal ?

**JOIN NOW**

Simply Login to

[www.royalteam.in](http://www.royalteam.in)

# Thank You